

MONTANA *Gardens*

The Official Publication of the Montana Federation of Garden Clubs, Inc.

SUMMER 2013 ♣ VOL. 59 ♣ ISSUE 2



- NGC Member of Honor
- 2013 MFGC Convention
- District Meetings in Photographs
- Landscape Design School

Contents

- 2 President's Message
- 2 NGC Member of Honor—Jane Ereaux
- 3 Lewistown GC Receives Grant
- 3– 4 MFGC Convention Programs
- 4 Convention Directions/Life Members
- 5 MFGC Convention Registration
- 5 MFGC Elected Office Nominations
- 5 Proposed By-Law Changes
- 6 Jubilee Grants
- 6 Horticulture Scholarship
- 6– 8 District Meeting Photos
- 9 New Club/GROW Awards
- 9 Glendive Anniversary/Scholarships
- 10 Landscape Design School Registration
- 10 Prepping for Summer
- 11 Chaplain's Message/Big Sky Stars
- 12 Montana Gardens Information/
Calendar



Become a fan of Montana Federation of Garden Clubs on Facebook! Stay up to date with local gardening activities, check out helpful articles we've found across the web, and view photos of gardens and club members. Keyword: **Montana Garden Clubs**

On The Cover

"Orchid Earrings" designed by Jane Ereaux of the Malta Dirt Daubers. The earrings are an Artistic Craft made of dried *Oncidiup* (Orchids) and *Lathyrus odoratus* (Sweet Pea) seed. They are featured in the 2014 *Vision of Beauty* calendar, which will be available for purchase at the MFGC convention in Helena.

SMOKEY BEAR
friendship organic
environment EDIBLE
community native plants
PUBLIC RELATIONS Woodsy Owl
RESTORATION
Judges Council LEADERSHIP
PARTNERSHIPS air quality
beautification aquatic ecosystems
floral design fundraising
Blue Star Markers HORTICULTURE
CONSERVATION YOUTH
Habitat for Humanity xeriscaping

President's Desk

This is my last letter to you as the Federation's president. These last two years have been an amazing and enjoyable experience. I just returned from visiting each District and appreciate the wonderful hospitality. Members and clubs have accomplished so much to keep "Montana—The Last Best Place." You have beautified your communities, provided community gardens and fresh food to people in need, sustained, conserved and protected our precious resources, and grew as leaders. Additionally, you've devoted hundreds of hours of effort working with children and others with special abilities, staged flower shows, provided excellent educational programs, and produced beauty all around you. Each club and member is extraordinary. Thank you!



State officers and chairmen, advisory board members, and district directors worked tirelessly this term. They created flower show and landscaping schools; Jubilee grants, awards and recognition; contests and media libraries; speaker and member databases; social media and marketing ideas, and promoted the Federation in gardening publications and online. Four new clubs—Belgrade, Big Timber, Hardin and Joliet—joined MFGC to grow seeds of friendship and knowledge. Convention and Fall Board chairmen created energizing membership meetings. This summer, publications featuring our 75th Federation anniversary and a travel guide to each club's community beautification projects and gardens will be released. Two Blue Star Markers honoring the Armed Forces of America will be dedicated. Each committed club leader and chairman is exceptional. Thank you!

I invite you to join me at the 76th annual convention in Helena on June 28 and 29 as we greet the new NGC and MFGC administrations. Their themes to protect and conserve our natural resources and to emphasize member education is a continuum of the ideals of this term. I'm honored and grateful that you shared your love of gardening with me.

Phyllis White

Looking for a unique gardening gift?

GIVE A GARDEN CLUB MEMBERSHIP TO YOUR NEIGHBOR OR FRIEND.
TALK TO YOUR CLUB TREASURER ABOUT A GIFT OF MEMBERSHIP TODAY!

NGC Member Award of Honor

Jane Ereaux



Jane Ereaux, member of the Malta Dirt Daubers Garden Club, has been chosen as the 2013 Member Award of Honor winner for the Rocky Mountain Region. A part of Montana Federation of Garden Clubs since 1996, Jane was nominated for her exemplary contribution as a hard-working, creative club member at the local, district and state level.

Local activities and accomplishments:

Holding office as club president

- Co-Chairman of a large project that consisted of the landscaping of a historic house in Malta, Montana. Jane continues to be on the committee who maintains this beautiful community feature.
- Co-Chairman of the 2007 state convention held in Malta.
- Co-Chairman of a committee that developed a bird sanctuary with a path, bird houses and signage along the Milk River in Malta.
- Contributes to the planning and spring planting of about 80 half whiskey barrels on the streets of the town. This is the local club's biggest fund raiser.
- Chairman or co-chairman several times for the Malta Dirt Daubers standard flower show, as well as exhibiting in the show.
- Participates in the planning and exhibiting at the local country fair, which includes booths that each community in the county decorate.

District activities and accomplishments:

- 2009-2013 District Co-Director for the Hi Line District of MFGC
- Participated on the committee for the Malta club when they have been the host club for the District Meeting
- Supports the clubs in her district with newsletters, information and visits.

State organization activities and accomplishments:

- State awards chairman for 6 years.
- Chairman of the MFGC Long Range Planning committee.
- Current Third Vice President of the MFGC. She serves on the Executive Board as well as the Finance Committee.
- Jane has used, and continues to use, her skills working with diverse clubs and members to further the goals of her club, the Montana Federation, and National Garden Clubs. Her tireless dedication, computer abilities, and business skills are especially valuable and appreciated. She will be presented with a certificate and pin by President Shirley Nicolai at the 84th Annual National Garden Clubs, Inc. Convention in Seattle, WA on May 25th.

Lewistown GC Receives Grant

NGC Grants Club \$3,000

Two unprecedented flooding events in the spring of 2011 left the Labyrinth Garden in Lewistown's Frank Day Park completely under water for weeks. Memorial rocks, mulch and plant materials were extensively damaged and washed away. Lewistown Garden Club members applied to National Garden Clubs and received \$3,000 to refurbish the area, including new landscape edging, soil amendments, plant material and labor. The club also received \$200 from the MFGC Jubilee Grant program. The garden club is partnering with the local Art Center to cover other costs and maintenance.



NGC President Linda Nelson



National Garden Club's 43rd president, Linda Nelson, will be the Federation's honored guest at the convention held in Helena and hosted by the Townsend Garden Club. Her theme during this administration is **MAKING A WORLD OF DIFFERENCE – Choices Matter**. This theme is rooted in NGC's Conservation Pledge to protect and conserve earth's natural resources. *I pledge to protect and conserve the natural resources of the planet earth and promise to promote education so that we may become caretakers of our air, water, land, forest and wildlife.* She will encourage members to examine their gardening practices to assess whether they are protecting and conserving our natural resources. Come to Helena to meet Linda!

MFGC Convention Programs

June 28-29, 2013 in Helena, MT

Design by Cheryl Caroll

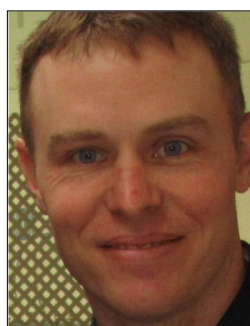


Cheryl has been a member of MFGC for 20 years, six of them serving as a club president. Cheryl's passion has been creative design for 35 years. She became a Flower Show Judge 15 years ago. Cheryl has consistently won Best of Show at the Western Montana Fair Flower Show in the "Miniature" division. The most recent win was at the 2012 convention in Bozeman. Cheryl also has a passion for gardening, and belongs to the Gladiolus Society and the American Dahlia Society.

Program: "Scale is the Secret to Petite Design"

Cheryl's program will emphasize; scale, containers, plant material, tools and tips on Petite design.

Vegetable Gardening by Brent Sarchet



Brent grew up on a farm in Western Nebraska, where he developed a passion and love for agriculture. He received his BS and MS from the University of Wyoming. He is currently the Montana State University Agriculture and Natural Resources Extension Agent for Lewis & Clark County. His primary focus areas include: large and small agricultural livestock and crop production, horticulture/gardening, small farm sustainability, food preservation and local food system development. He and his wife have a small farm located south of Helena, Montana, and they have a 2 year old daughter who keeps them very busy.

Program: "So You Think You Know Your Vegetables and Fruit"

Brent will cover some fun facts and growing tips of different vegetables and fruits.

Photography by Chris McGowan and Kenton Rowe



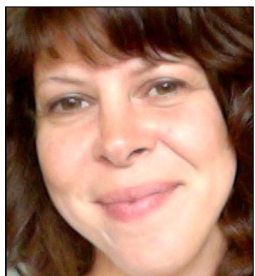
Chris McGowan is a native of Montana which has allowed him to spend a lot of time exploring the wondrous beauty this amazing state has to offer. At an early age Chris was inspired by the majestic landscapes and towering mountains. He believes that helped train his eye for photography and allows him to capture some of Montana's beauty.

Kenton Rowe has been published world wide, including Montana and Montana Outdoors magazine and has had his extraordinary photos exhibited in the "Holter Museum of Art". Kenton will also share his knowledge of taking great photos.

Program: "Learn the Art of Taking Better Pictures"

Chris and Kenton's program will explain how to take a better photo.

Indoor Gardening by Kellee Anderson



Owner-operator of Mountain Gardenscape in Butte MT, Kellee is a horticulturalist and the principal designer in her business that offers master landscape plans. Another facet of her business is hosting table gardening and terrarium workshops.

Program: "Terrariums"

Kellee's program will give a brief history of terrariums and cover plant care and growing needs, along with a list of the best plants to use. Kellee will finish by demonstrating the art of planting a terrarium.

Community Gardening by Amy Grisak

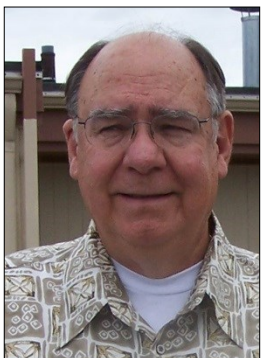


Despite working in gardens for over 30 years, freelance writer Amy Grisak continues to use her home gardens as a horticulture experiment looking for better ways to raise vegetables, herbs and flowers. She shares these experiences with her readers in magazines such as Horticulture, Organic Gardening and Hobby Farms. Amy also is the co-founder and president of River City Harvest, which strives to educate and create gardening opportunities for Great Falls' residents.

Program: "If You Build It, They Will Plant"

Amy will talk about the history of community gardens, what it took to get them off the ground, and the bumps along the way. Also, growing veggies for Meals On Wheels and the Salvation Army and the creation of a community herb garden will be discussed.

Horticulture by Jim Sadler



Jim is an accomplished Horticulturist. His credentials are as follows: Master NGC Judge, American Rose Society Horticulture and Arrangement Judge, American Iris Society Garden Judge, member of the American Dahlia Society and formerly a certified judge of the American Dahlia Society. Jim has been the Superintendent of the Floriculture building at the Western Montana Fair for the past 15 years where they put on 5 flower shows: a Standard Show, a Fair Show, an American Gladiolus Society Sponsored Show, American Dahlia Society Sponsored Dahlia Show, and an American Rose Society Sponsored Show. He gardens with his wife Linda on an acre in Missoula in a traditional English Cottage style with clipped topiaries and parterres.

Program: "RED to BLUE"

What you need to know for entering flower shows and county fairs. Jim will cover topics on selecting your best specimen, grooming, conditioning, and containers.



Location of Convention & Directions

Jorgenson's Hotel & Restaurant

1714 11th Ave. Helena, MT

(adjacent to Capital Hill Mall)

Hwy. 12E & W 409-442-1770

The Townsend Garden Club is pleased to host this convention, and looks forward to seeing our Federated members June 28-29, 2013 in Helena. As you can see, we have a great line up of programs for all

to enjoy. We suggest you make your reservations as soon as possible because there are many activities planned for that weekend.

From the West - Follow Hwy #12E, In Helena you will be turning left onto 12E/11 Ave. Go past the mall, Jorgenson's is a few feet past the mall on the left. Big sign with red background.

From the North - Traveling on Interstate #15 you will exit #192, (Capitol area) as you come to the light turn right, turn as soon as you can get into the left lane. Jorgenson's is about 2-3 blocks on the left. Just past McDonalds on the left you will see a big sign with red background.

From the South - Traveling Interstate #15, exit #192, (Capitol Area) turn left. Cross over I 15, stay in left lane. Jorgenson's is about 2-3 blocks on the left. Just past McDonalds on the left you will see a big sign with red background.

From the South, South East - Take Hwy 287N (from the 3 Forks area) In Townsend Hwy 12W will join Hwy 287, Head toward Helena, just past Wal Mart-stay on 12W (287 joins I 15) stay in left lane as you pass over I 15. Jorgenson's is about 2-3 blocks on the left. Just past McDonalds on the left you will see a big sign with red background.

Life Members

Susan Woods, Life Members Chairman



SUSAN WOODS

Two new life members are Gail Stuart and Elaine Lux-Burt of Anaconda.

I would like to thank the nine members — Jim Sadler, Sue Leferink, Pat Biggs, Jane Ereaux, Phyllis White, Joyce Backa, Glenna Waltee, Denise Fink and Susan Woods — who donated \$50 to become a Life Members Rose as well as Dearborn and Gallatin Empire Garden Clubs who participated in Dollars for Scholars. These donations will enable us to provide a \$1,000 scholarship to a worthy student this year. Since Life Members was founded, we have provided over \$30,000 in scholarship money to Montana students.

Come one, come all to the Life Members dinner on Friday, June 28 during convention in Helena. Hopefully, we'll have a short business meeting before the fun begins. The theme is

Cowpokes and Dance Hall Girls. Even if you do not come costumed, wear your dancing shoes as we'll learn how to do the two step from Tim Pattison, Helena dance instructor. There will be a no host bar at 6:00 with dinner at 7:00 p.m.

REGISTRATION FORM

"Montana's Treasures"

76th ANNUAL STATE MEMBERSHIP CONVENTION
Montana Federation of Garden Clubs
June 28-29, 2013

Helena - Jorgenson's Hotel & Restaurant
1714 11th Ave., Helena, Montana

Name: _____

Email: _____

Address: _____ City: _____

State: MT Zip _____ Club: _____

District: _____

Hotel registration deadline is **Saturday, JUNE 1st** 1.800-272-1770 HOT BREAKFAST INCLUDED
(They will not hold block of room or \$99 + tax room price after this date.)

Registration and Meals: Convention Registration Postmark Deadline is Saturday, JUNE 1

No refunds of registration fee. No meal registrations after June 15. No refunds for meals after June 15.
Executive, Finance and Advisory Committee members will meet on Thursday afternoon, June 27.

Registration: ALL MFGC Members Must Register to attend any function

Full Time Registration: June 28-29, postmarked on or before JUNE 1 \$ 21.00 _____

Full Time Registration postmarked after JUNE 1 \$ 28.00 _____

One Day Registration: Friday ____ or Saturday ____ \$ 15.00 _____

One Day Registration postmarked after JUNE 1 Friday ____ or Saturday ____ \$ 20.00 _____

On-Site Full Time Registration (no meals) \$ 35.00 _____

On-Site One Day Registration (no meal) \$ 20.00 _____

Meals: CHECK ALL THAT APPLY

(*Please make list of any food allergies and send on a separate sheet with Registration)

*Friday Lunch \$ 15.00 _____

Remarks by Linda Nelson, NGC President

*Friday - Life Members' Banquet (open to Life Members & Potential Members) \$ 25.00 _____

*Saturday, MFGC Awards Luncheon \$ 14.00 _____

*Saturday Banquet, Installation, NGC Awards Presentations \$ 25.00 _____

TOTAL ENCLOSED \$ _____

Please make checks payable to: **Townsend Garden Club,**

Send to: **Ruth Layton/Marilyn Lane, 235 Brown St., Toston, MT 59643-9700.**

Ruth's phone # is 266-5376, Marilyn's phone # is 266-5172.



The 2012-2014 Nominating Committee recommends the following candidates for 2013-2015 elected office. Elections will take place at the Montana Federation of Garden Clubs Convention in Helena on June 28-29.

- First Vice President, Linda Sadler (Missoula Garden Club)
- Second Vice President, Joyce Hendricks (Thumb-R-Green, Billings)
- Treasurer, Glenna Waltee (Whitehall Garden Club)
- Recording Secretary, Lynne Mahan (Jumping Junipers GC, Chinook)

Elected Nominating Committee members are Patricia Biggs, Susan Billmeyer, Delores Gregory, Jim Sadler, Diane Ward, Carol Works, Jean Thomas with MFGC Immediate Past President, Norman DeNeal, Chairman.



The 2011-2013 Long Range Planning and Organizational Study Committee recommends the following MFGC by-law changes to be debated and voted on at the Montana Federation of Garden Clubs Convention in Helena on June 28-29. Committee members are Jane Ereaux, Chairman, Mary McLane and Darlene Skari.

ARTICLE V—Membership

Current: Article V. 2.b.1. Individual Member: any individual who has paid the annual dues.

Proposed: Article V. 2.b.1. Individual Member: any individual who has paid the annual dues. Any individual who has not paid the annual dues by October 1 of the fiscal year shall be suspended from membership in MFGC and lose all membership privileges.

Rational: Page 406 of Robert's Rules states that the by-laws must state that unpaid dues results in a suspension.

ARTICLE XIII—Advisory Council

Current: Article XIII. 1. Membership: the past State Presidents of MFGC.

Proposed: Article XIII. 1. Membership shall be the past presidents of MFGC who are dues paying members and active in their clubs and districts.

Rational: Those members who have left MFGC should not have a vote nor do they provide support for this group.

Jubilee Grant Awards

Mary McLane, Chairman



MARY MCLANE

The Jubilee Grants have been awarded for this year. Congratulations to the Whitehall Garden Club, the Anaconda Garden Club and the Butte Garden Study Group! Each received \$200 and will match that amount.

The Whitehall Garden Club project is called "Plant-It-Pink" and will be the pink ribbon emblem of the Breast Cancer Awareness campaign. The project is part of the landscaping for the new Whitehall Ambulance and Training Center. Flowers, ground cover, and shrubs will be included to provide year-round interest.

The Anaconda Garden Club project is a rehabilitation of a raised garden in Kennedy Common. After removing existing shrubs and adding new growing medium, deer-resistant shrubs, bulbs, perennials and annuals will be added.

The Butte Garden Study Group will oversee and aid the Whittier Elementary School in the Whittier Wildcat garden with the installation of a pond. They will use a solar-powered pump to create a waterfall and add landscaping plants around the pond.

Again, congratulations to all these clubs and we look forward to "before" and "after" pictures at the MFGC Fall Board meeting in Missoula on October 12.

MONTANA FEDERATION DUES ARE DUE JUNE 1ST TO THE
MFGC TREASURER, PO BOX 444, WHITEHALL, MT 59759-0444

Horticulture Scholarship

Diane Ward, State Membership Chairman-Whitehall Garden Club



DIANE WARD

The Whitehall Garden Club is again offering a scholarship to any Montana high school graduate attending a Montana institution of higher learning with a major in the Horticulture field. Examples of that major may include, but not limited to: Horticulture, Floriculture, Landscape Design, Greenhouse or Nursery Management, Plant Genetics, Forestry. The amount awarded this year will be \$450.00.

Completed applications and all correspondence must be sent by June 1, 2013, to:
Barbara Willis, Whitehall Garden Club
4 Wrangler Road, Whitehall, MT 59759

For more detailed information and an application, interested parties may call or email Barbara (406-533-8344 bwillis419@live.com) or go to <http://www.mtfgc.org/pdfs/whitehallscholarship.pdf>. Information regarding this and other club, NGC and Federation scholarships may be found on websites: www.mtfgc.org or www.gardenclub.org.

Pictures from the District Meetings



Bullhook Blossoms of Havre



Malta Dirt Daubers



Gumbo Gals of Nashua



Jumping Junipers of Chinook



Chester Garden Club



Gallatin Empire Garden Club



Saco Garden Club



Dillon Garden Club



Mission View Garden Club



Miles City Garden Club



Lewistown Garden Club



Anaconda Garden Club



Helena Garden Club



Whitehall Garden Club



Thumb-R-Green Garden Club



Dearborn Garden Club



Rainbow Garden Club



Missoula Garden Club



Sow and Grow Garden Club



Great Falls Flower Growers

Left: Litt'l Britches Garden Club



Stevensville Garden Club



Townsend Garden Club



MFGC State Officers: Glenna Waltee, Denise Fink, Phyllis White, Jane Ereaux, Linda Sadler



Tom Satterly presenting an historical reminiscence of "Butte: The Cosmopolitan Town of Montana" at the



Custer Country Extension Agent Mike Schuldts in Miles City.



Butte Garden Study



TOP: Mick Gainan in Billings



LEFT: Lewis and Clark Interpretive Center Park Ranger, Mary Ellen Ertle, giving a talk on "The Organic Foods of Lewis and Clark."



Judy Arledge presenting her stories of handmade basket-making with natural materials at the Western District Meeting in Missoula.

Hardin Garden Club

We are pleased to announce the addition of the Hardin Garden Club to MFGC. Organizer Marnie Means is gathering gardeners of all ability levels to meet once a month in the evenings. The 20+ members are busy planning programs and summer garden tours in the Yellowstone District. Watch for more information on their club page at mtfgc.org. Welcome!

Grow Awards

GROW Membership Awards [Gain members by Reaching Out, Welcoming all] were presented to Joyce Hendricks, president of Thumb-R-Green Garden Club and Bobbie Meyers, president of Sow and Grow Garden Club of Billings, MT by MFGC President Phyllis White. The NGC award recognizes clubs that increased their membership this year. Other clubs earning the award were recognized at the 2012 Fall Board meeting in Anaconda.



Glendive 65th Anniversary



Members of the Glendive Garden Club were surprised and delighted to receive recognition of the club's 65th anniversary from National Garden Club president Shirley Nicolai and Phyllis White, president of Montana Federation of Garden Clubs at this spring's District meeting. Glendive members have been active in continuing projects at Makoshika State Park and the city's Priscilla Hudson Garden. They also maintain the city's welcome sign planting and the public library containers.

Scholarships



Joshua Pecukonis, a Great Falls native and Montana State University student, was selected by the Scholarship Committee as Montana's candidate for the National Garden Club Scholarship. Scholarship recipients will be announced at the NGC Seattle Convention at the end of May.

Heather Begger, pictured left, was selected for the Murphy Memorial Scholarship. She is an Environmental Horticulture Science major with a 3.8 grade point average at Montana State University, Bozeman. She has been the recipient of the American Society of Horticulture Sciences Collegiate Scholarship for the past two years as well as the Great Falls Flower Growers Garden Club Scholarship, Circle of Success Scholarship and many others. The Murphy Memorial Scholarship is named for long-time Dearborn Garden Club member, Mabel E. Murphy and her husband Arthur J. Murphy by their daughter, Joyce Jackson Hawkes, a member of the Gallatin Empire Garden Club in Bozeman.

REGISTRATION FORM

The Montana Federation of Garden Clubs, Inc.
In cooperation with National Garden Clubs, Inc. presents
Landscape Design School Course III Series 3

May 17, 18, 19, 2013
Super 8 Motel - 2200 11th Ave., Helena, MT
Phone: 406-443-2450

Name: _____ Phone: _____

Email: _____

Address: _____

REGISTRATION Fee Course III

For Credit (includes test fee)	\$55.00	_____
Refresher Credit for those with		
Landscape Consultant Certification	45.00	_____
Audit (Friday & Saturday)	45.00	_____
Late Fee (postmark after May 10)	10.00	_____

COURSE TOTAL: _____

Lodging & Meeting Room will be at the Super 8 Motel in Helena:

- **\$58.00 +tax** (double queen) - Mention MT Fed. Of Garden Clubs for rate
- Free full hot breakfast

Other meals will be announced at time of school.

All registrations due by May 14th. No refund after that date. (No exceptions)

Make checks payable to:

Mary J. Olsen, LDS – Course III

15 Doe Lane, Townsend, MT 59644-9652

Phone: 406-266-5695

Email: wlmolsen@mt.net (new email)

LANDSCAPE DESIGN SCHOOL COURSE III REQUIREMENTS:

- Required Reading – textbook, Stewards of the Land (\$40.00 -- available in NGC Member Services Catalog or call 1-800-550-6007 or email: headquarters@gardenclub.org)
 - Study Chapters for Course III – Chapters 6, 12, 15, 24, 25, 32, 18, 29, 30.
- The National Gardener subscription, 3 years \$18.00 available from NGC. The article to be read will be provided to you at registration. Proof of purchase of subscription needs to be brought to class.

You are responsible for purchase of your own course textbook & Nat'l Gardener subscription.

Prepping for Spring & Summer

Annie Mollock, Conservation Chairman



ANNIE MOLLOCK

CHECKLIST FOR SPRING:

✓ **Survey the yard.** Make note of tree limbs that should be removed or cabled, especially those that overhang structures. Cut down last year's perennial foliage, and toss it into the compost pile. Rake mulch from beds planted

with bulbs before foliage appears, and refresh mulch in other planting areas after soil warms.

✓ **Tools.** Sharpen and clean your gardening tools so everything is ready when things start growing. Choose new plants for the garden. Order perennials, trees, and shrubs for spring planting.

✓ **Prune trees and shrubs.** Remove dead, damaged, and diseased branches from woody plants. Thin and trim summer-blooming shrubs such as butterfly bush, hydrangea, and most roses, except for old-fashioned once bloomers. Prune cold-damaged wood after plants resume spring

growth. Prune spring-blooming shrubs and trees after flowering.

✓ **Check soil pH with a home soil-test kit,** taking several samples from different planting areas for an accurate reading. Enrich soil as necessary: Add dolomitic lime to raise the pH or elemental sulfur to lower the pH.

✓ **Clear the planting area as soon as soil can be worked,** removing sod or weeds and debris. Spread a 4-inch layer of compost or well-rotted manure and any amendments over soil, and cultivate it to a depth of 10 to 12 inches with a spading fork.

✓ **Plant bare-root trees, shrubs, and perennials such as hostas and daylilies by early spring.** Choose a cool, cloudy day if possible. Transplant container-grown plants anytime during the growing season except midsummer; be sure to water them thoroughly. Sow seeds of cool-season flowers like sweet peas, poppies, and calendula, and vegetables such as lettuce, parsley, and spinach.

✓ **Start a compost pile, or use a compost bin,** if you don't have one already. Begin by collecting plant debris and leaves raked up from the garden. Chop these up first to speed decomposition. Add equal amounts "brown" (carbon-rich) materials like dried leaves and straw and "green" (nitrogen-rich) materials like kitchen scraps in even layers with water. Turn regularly. Continue adding to the pile throughout the season for rich, homemade compost. In Montana it takes a while to get good compost but be patient and you will be rewarded with rich, healthy compost to add to your garden!

CHECKLIST FOR SUMMER:

✓ **Early summer is the ideal time to plant containers,** such as patio pots, window boxes, and hanging baskets. All threat of frost has surely passed along with the passing of spring, so you can safely put containers outside. Don't forget to feed container-bound plants as the summer progresses.



Photo courtesy Better Homes & Gardens



Photo courtesy Catalogs.com

CHECKLIST FOR SPRING:

- ✓ **Survey the yard.** Make note of tree limbs that should be removed or cabled, especially those that overhang structures. Cut down last year's perennial foliage, and toss it into the compost pile. Rake mulch from beds planted with bulbs before foliage appears, and refresh mulch in other planting areas after soil warms.
- ✓ **Tools.** Sharpen and clean your gardening tools so everything is ready when things start growing. Choose new plants for the garden. Order perennials, trees, and shrubs for spring planting.
- ✓ **Prune trees and shrubs.** Remove dead, damaged, and diseased branches from woody plants. Thin and trim summer-blooming shrubs such as butterfly bush, hydrangea, and most roses, except for old-fashioned once bloomers. Prune cold-damaged wood after plants resume spring growth. Prune spring-blooming shrubs and trees after flowering.
- ✓ **Check soil pH with a home soil- test kit,** taking several samples from different planting areas for an accurate reading. Enrich soil as necessary: Add dolomitic lime to raise the pH or elemental sulfur to lower the pH.

✓ **Clear the planting area as soon as soil can be worked,** removing sod or weeds and debris. Spread a 4-inch layer of compost or well-rotted manure and any amendments over soil, and cultivate it to a depth of 10 to 12 inches with a spading fork.

✓ **Plant bare-root trees, shrubs, and perennials such as hostas and daylilies by early spring.** Choose a cool, cloudy day if possible. Transplant container-grown plants anytime during the growing season except midsummer; be sure to water them thoroughly. Sow seeds of cool-season flowers like sweet peas, poppies, and calendula, and vegetables such as lettuce, parsley, and spinach.

✓ **Start a compost pile, or use a compost bin,** if you don't have one already. Begin by collecting plant debris and leaves raked up from the garden. Chop these up first to speed decomposition. Add equal amounts "brown" (carbon-rich) materials like dried leaves and straw and "green" (nitrogen-rich) materials like kitchen scraps in even layers with water. Turn regularly. Continue adding to the pile throughout the season for rich, home-made compost. In Montana it takes a while to get good compost but be patient and you will be rewarded with rich, healthy compost to add to your garden!

CHECKLIST FOR SUMMER:



Photo courtesy Buildacompostbin.com

Chaplain's Message

Grace Lucas, Chaplain



GRACE LUCAS

What a joy it is to sit out in the sunshine and see the beautiful colors. All the seeds we planted in our garden with love have resulted in blooming into an exciting picture. While we are looking at the flowers we can hear the birds singing their joyous songs. What a supreme time of the year to enjoy the beauty of our gardens and nature.

Donations

Dollars for Scholars Club donations to benefit Life Member Scholarships

- ♦ Gallatin Empire Garden Club \$52.37

New Montana Rose Life Member to benefit horticulture scholarships presented by MFGC Life Members. Donations are tax deductible. **Denise Fink**

New Life Members Elaine Lux-Burt and Gail Stuart, Anaconda Garden Club

Penny Pines:

- ♦ **Anaconda Job Corps Junior Garden Club** - \$68 Requesting a Memorial Plantation for their Culinary Arts Instructor Douglas James (D.J.) Garland
- ♦ **Jumping Junipers Garden Club** - \$68

Big Sky Stars

- ★ A Star and THANK YOU to each club hosting this spring's District meetings: **Miles City, Billings, Townsend, Missoula, Dillon, Malta, Lewistown, Chester and Great Falls.** THANK YOU to each 2011-2013 District Director: **Carol Cain, Betty Furgason, Jane Ereaux and Sharon Miller, Ivy Jackson, Rosemary Corrigan, Joann Notti, Sue Leferink, Susan Yurman and Marie Jones.** We appreciate your service!
- ★ A Star to **Lit'l Britches Dirt Dabblers of Hamilton** for re-dedicating the Lost Trail Pass Blue Star Marker on May 25 in the Darby City Park.
- ★ A Star to **Gallatin Empire Garden Club of Bozeman** for dedicating a Blue Star Marker on May 18 at the North 19th and I-90 Rest Area.

MONTANA Gardens

Official Publication of the Montana Federation of Garden Clubs, Inc. Member of the Rocky Mountain Region and National Garden Clubs, Inc. All rights reserved.

This issue is available in color at

<http://www.MTFGC.org>

Club Contacts

MFGC President and Webmaster

Phyllis White
(406) 586-0400
gardens@bresnan.net
"Montana - The Last Best Place"

State Treasurer

Glenna Waltee
PO Box 444
Whitehall, MT 59759-0444
(406) 287-7988, gdwaltee@q.com

MT Gardens Editor

Erika Reece
erikalreece@yahoo.com

MT Gardens Circulation Manager

Diane Ward
PO Box 444
Whitehall, MT 59759-0444
(406) 287-3260, k-d@outdrs.net

Rocky Mountain Regional Director

Terry Kroke
tlkroke@yahoo.com
<http://sites.google.com/site/rockymtngardenclubs/home>

NGC President

Shirley Nicolai
www.gardenclub.org
"NGC - Proudly Serving our Members and the Community"

SUBMISSION REMINDER	
Deadline	Issue
April 1	Summer
July 1	Fall
Nov 1	Winter
Feb 1	Spring

SEND ARTICLES TO
Patricia Schlaeger
MT Gardens Editor
 388 Wilson Butte Rd.
 Great Falls, MT 59405-8404
tamarackgroup@yahoo.com
406-727-7633

Editor reserves the right to edit all submissions for content and length

Advertising Rates

Full Page: \$100
1/2 Page: \$50
1/8 Page: \$25

Greetings/Big Sky Stars/Memorials: \$5
Send wording and checks payable to MFGC to Glenna Waltee, *Treasurer*
Send wording to Patty Schlaeger, *Editor*

Mission Statement

The Montana Federation of Garden Clubs, Inc. promotes education, resources and networking opportunities for its members and Montana youth to promote the love of gardening, floral design, and civic and environmental responsibility.

Dates to Remember:

May 17-19 - Landscape Design School

May 23-26 - NGC Convention in Seattle, WA.

Registration forms are on the NGC website.

June 28 and 29 - MFGC Convention in Helena

hosted by the Townsend Garden Club

October 12 - MFGC Fall Board meeting in Missoula

See the full Calendar of Events with more info on our website, www.MTFGC.org

MONTANA Gardens

Montana Federation of Garden Clubs, Inc. (MFGC) is a non-profit organization with a Federal IRC 501(C) (3) status. All monetary contributions are tax deductible.

Montana Gardens is printed by Executive Services in Bozeman, MT

